



 **CADMATIC**

*Feel Empowered*

**Latest Highlights 2023 -  
Cadmatic Hull**

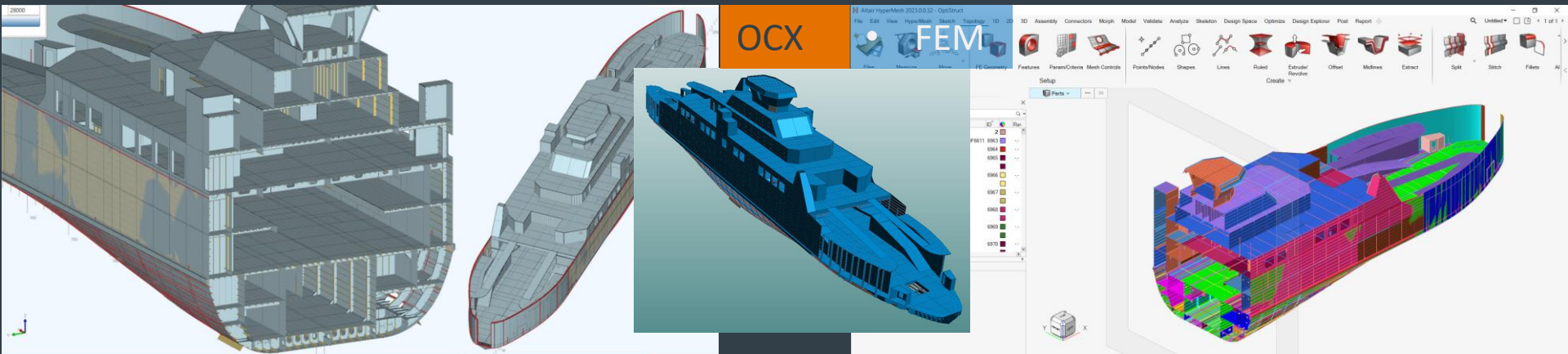
Olav van den Akker  
Technical Manager- Hull Application  
Customer Success

# Content

- Basic Design
  - Export / Import OCX construction
  - Napa Steel Import
  - Hull to Cos
- Construction Features & General in 2023
- Shell and Shape
- Production
- The Future With Next Level Modelling

## INTELLIGENT GENERAL ARRANGEMENT: HANDLE SIMULTANEOUS TASKS AND MANAGE DIVERSE DATA IN DIVERSE SOFTWARE APPLICATIONS

- Achieve efficiency and collaboration in Basic Design with our adaptable, fast and collaborative general arrangement tool, tailored to reflect real-life cooperation between naval design and engineering companies, shipyards, shipowners, and regulatory bodies such as classification societies



## Export / Import to OCX

Open Class 3D Model exchange defined by DNV-GL

- Provides the basic functionality of exporting 3D construction
- Meant to allow classification societies to use for approvals

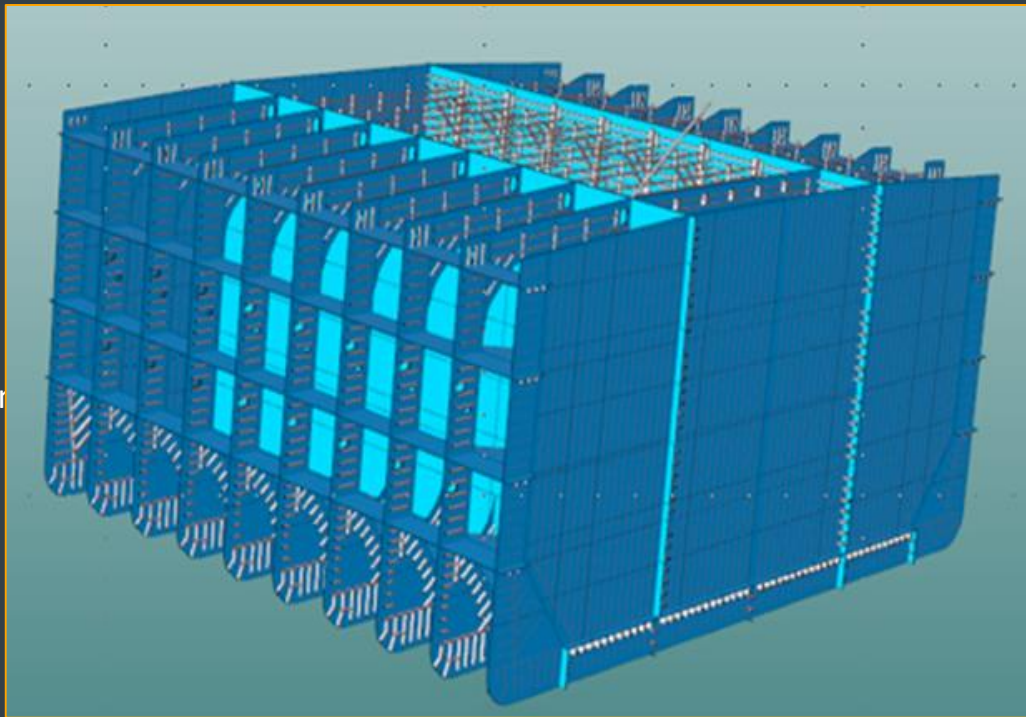
Fully topological to the OCX format

The process improves the drawing less strategy in shipbuilding

Having direct access to the 3D model improves the understanding of the design.

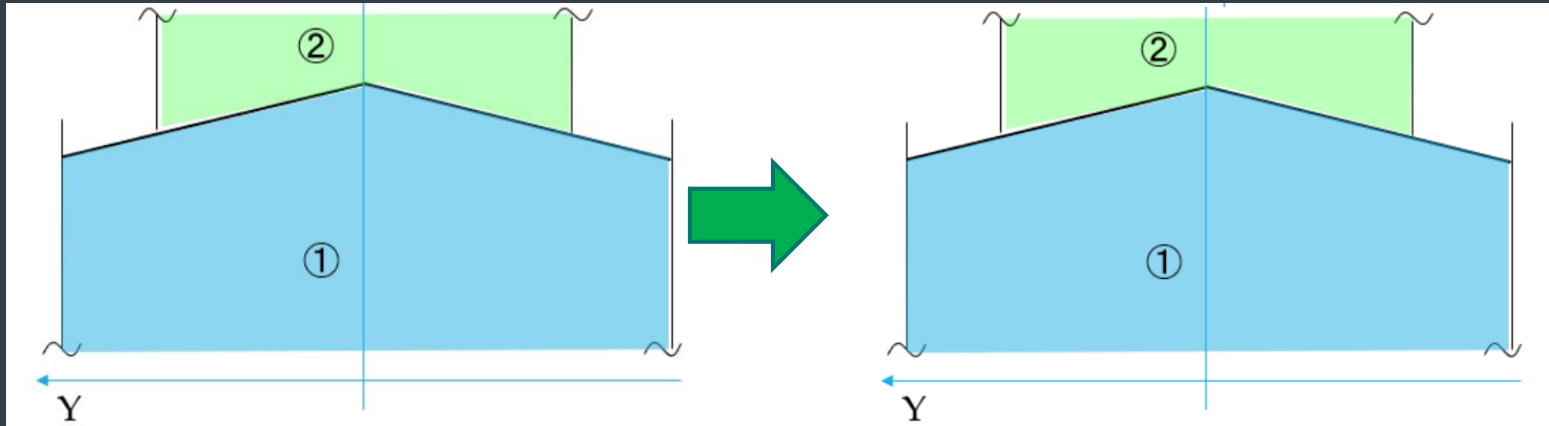
All parties involved in the vessel have direct access to the model no creation of dedicated drawings.

First version of import OCX construction now



## Napa Steel Import

- Cadmatic Support now the possibility to import slanted blocks when the Napa Block is selected.



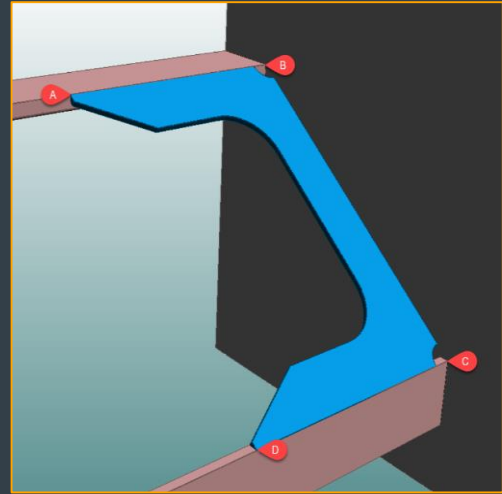
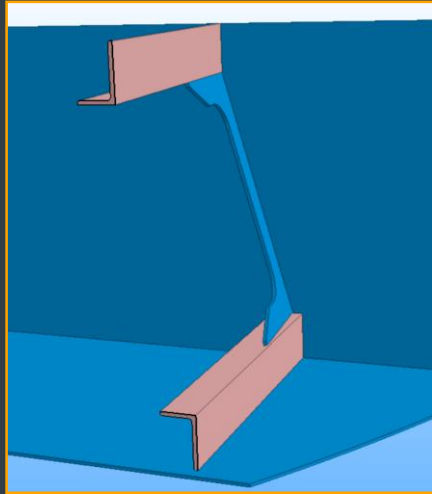
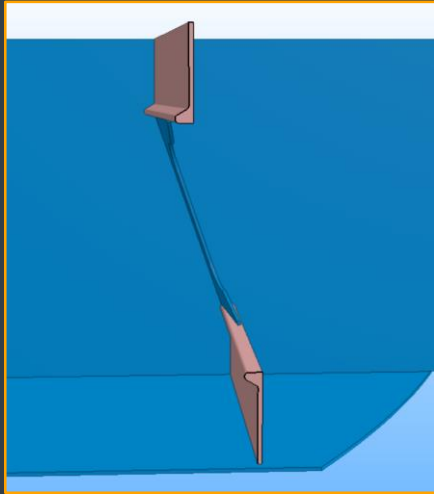
## HULL TO COS

- Smoothly navigate the complex shipbuilding environment with our seamless integration with outfitting data, state-of-the-art Request For Hole mechanism, information sharing with CADMATIC eShare and Hololens, optimal planning with Floororganise, and opening the door to the entire world with CADMATIC WebApi.



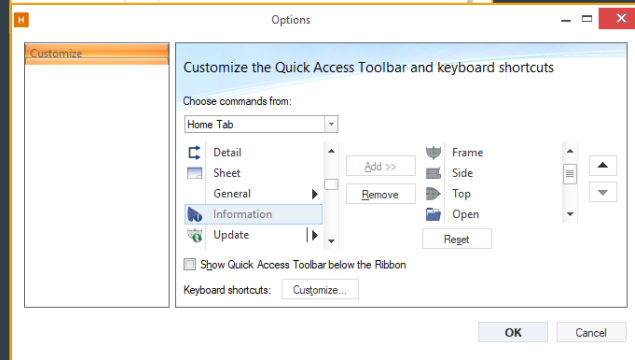
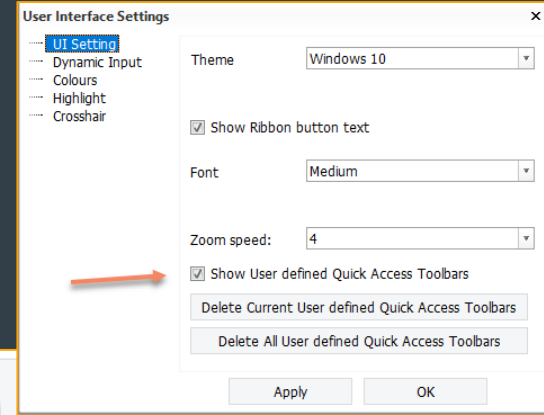
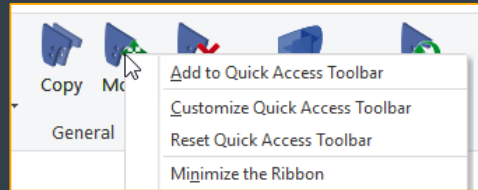
## Construction Features

- Brackets created easily in slanted planes.
- Profiles can be parallel to each other or non-parallel



# General User Experiences

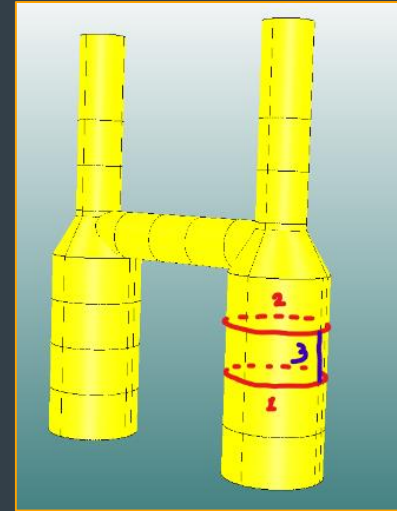
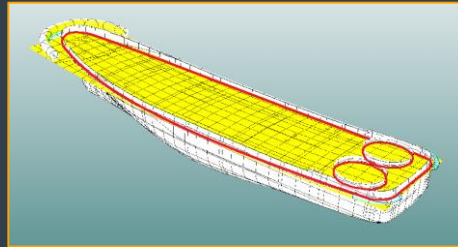
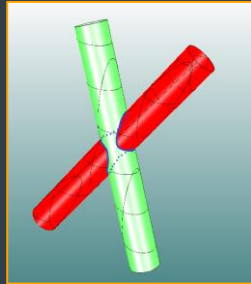
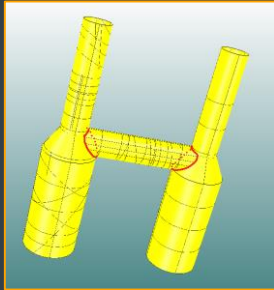
- Quick access toolbar.
- Toolbar can now be saved by the user for his most used functions / actions.
- Adding functions to this toolbar can simply done by a right mouse click.
- To use this, it needs to be toggled in the UI settings, otherwise the old behavior will be used.





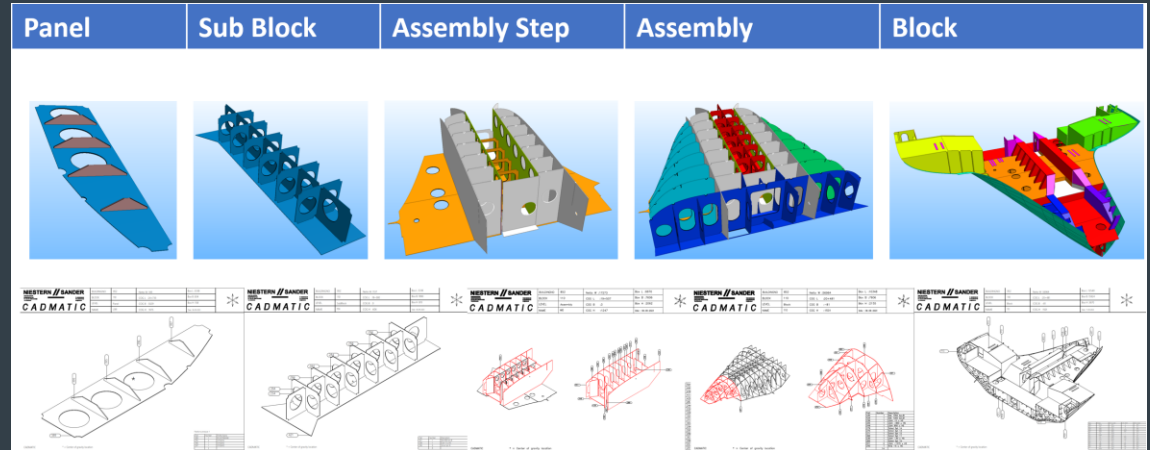
## Shell and Shape

- No shell plate development license is needed for single curved shell plates, cutting data can be created in 3D-Contek.
- Possibility to create 360 degrees Shell plates, possible to use the so-called closed Hull lines (1 line – 1 plate)



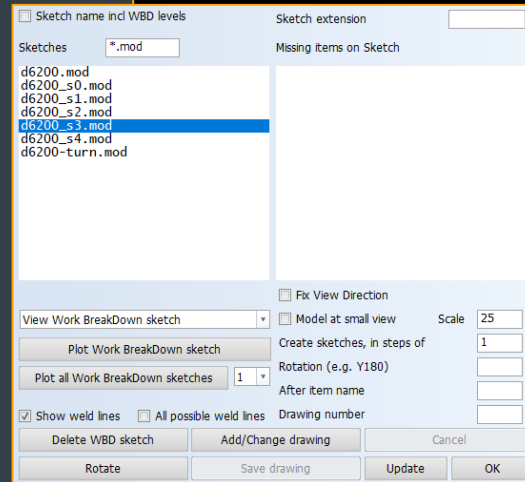
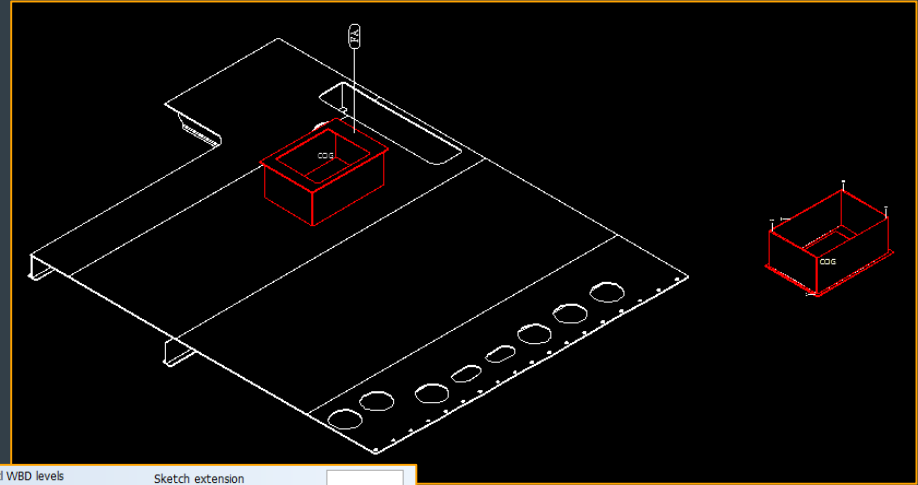
# PRODUCTION: smoothest bending and assembly

- Extended and customizable assembly and production information
- PDF and nesting documentation
- Brand new XLS reports



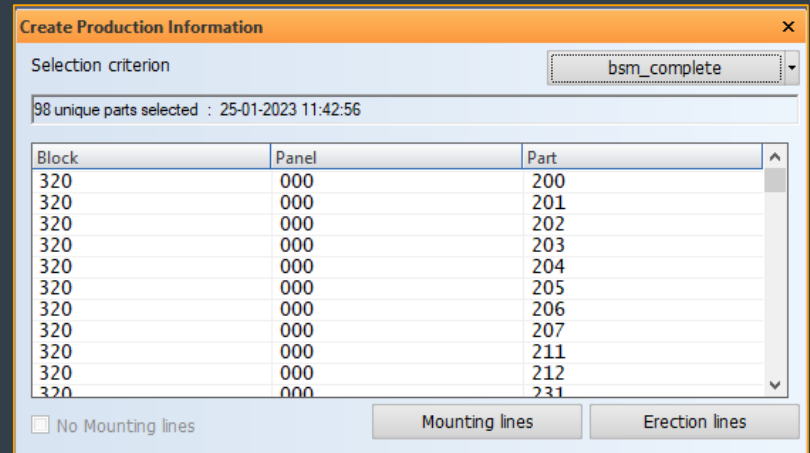
# Production

- WBD3D sketch
- It often happens that the construction is turned over on the shop floor during the assembly process.
- Rotate option after branch name
- Include 3D drawing and table of the lower branch



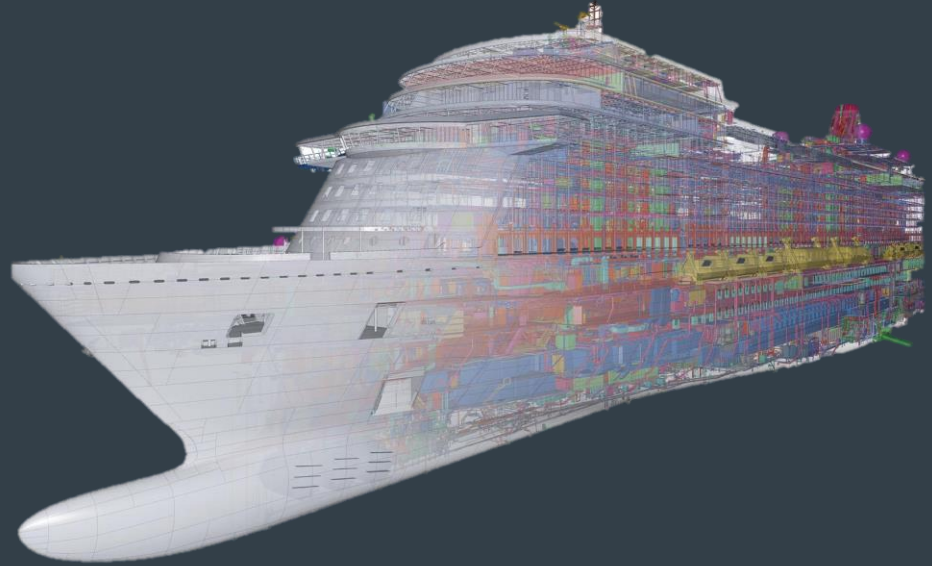
# Production

- Create Production Information is much faster because of another selection criterion
  - Filter the duplicate items based on the DXF file name
  - Up to 40% Time reduction will be quite realistic
  - Even more when the block contain small standard parts like lugs and brackets.



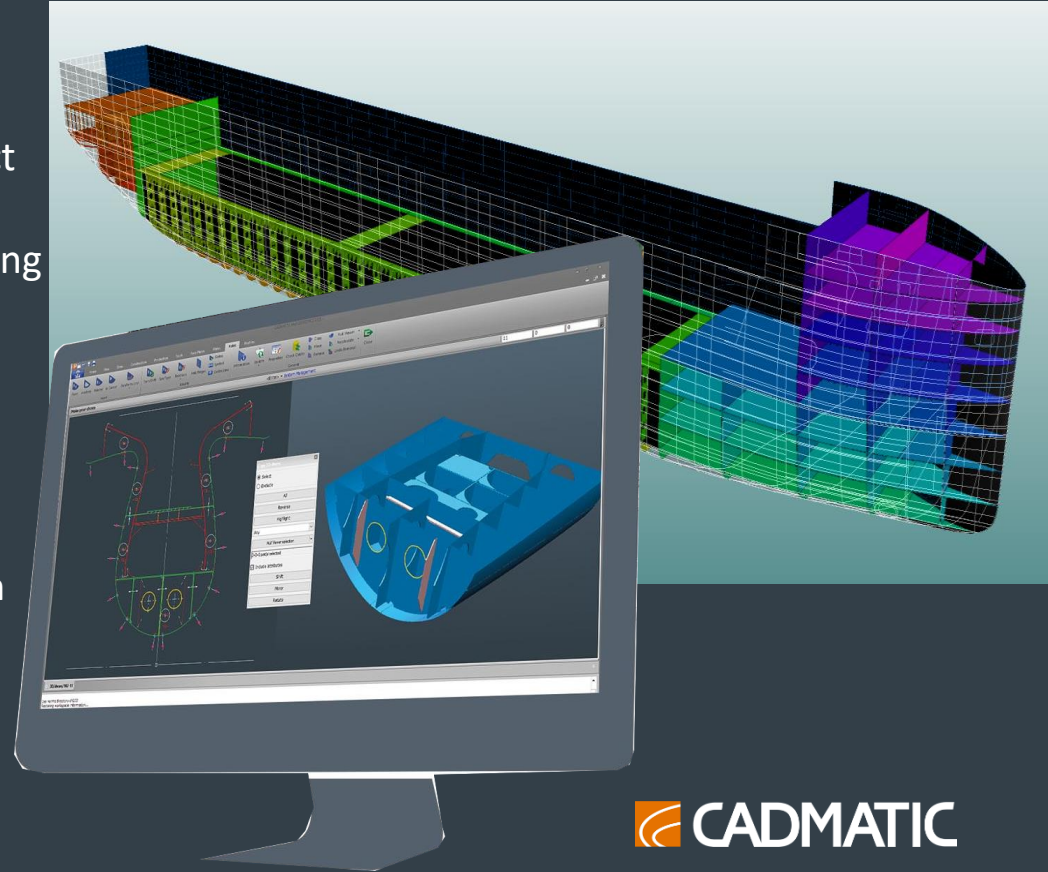
# NEW DEVELOPMENTS IN NEXT LEVEL MODELLING

- Extended direct 3D modelling functionality
- Symmetric modelling
- Soft seams for all profile construction types
- Transition from rule-based engineering to ML engineering



# NEXT LEVEL DESIGN PERFORMANCE

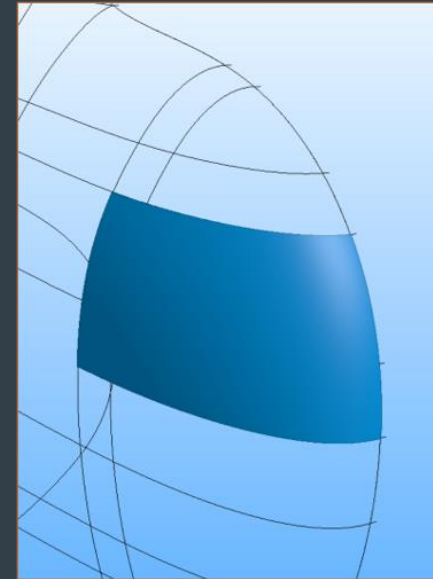
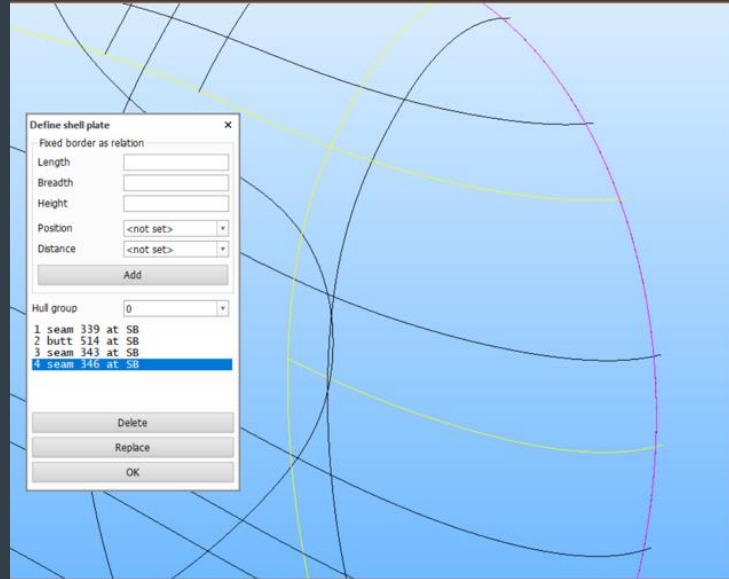
- Fastest on the market design capabilities enhanced with new direct 3D modelling in the state-of-the-art visualization core with better rendering and larger models (2023T2)
- Simplification and extension of the rule-based engineering method for automatic endcut assignment and automatic welding and beveling even for the tiniest of connections



# SHELL

Create even the most complex shell plates directly in 3D with the help of automatically determined boundary and group intersection hull lines.

2024T1





*Feel Empowered*