




Highlights of 2024 & Future

Paul Filius
Technical Director Hull Applications
Product Creation

Content

	A	B	C	D	E	F	G	H	I	J	K	L	M		
1												Part List Report			
2												Project:		Demo2024T3JP	
3												Object:		1000	
4												Date/time:		08-11-2024 08:42:14	
5															
6	Part	Panel	Number	Position	Type	Length	Width	Thickness	Material	Weight	Description				
28	12	D6200	1	1	PL5900X2500X12	5900	2500	12	AH36	1415,94	Deck 6200				
29	13	D6200	1	1	PL900X598X10	900	598	10	GR-A	43,06	Bulkhead Fr. 27				
30															
31	14	D6200	1	1	PL5900X2025X12	5900	2025	12	AH36	1047,97	Deck 6200				
32	15	D6200	1	1	PL4591X400X8	4591	400	8	GR-A	113,53	Long. bulkhead 3960				
33	16	D6200	1	1	PL890X598X10	890	598	10	GR-A	42,58	Bulkhead Fr. 26				
34	17	D6200	1	1	PL1775X500X10	1775	500	10	GR-A	60,35	Long. bulkhead 1320				
35	18	D6200	1	1	PL1290X598X10	1290	598	10	GR-A	61,71	Long. bulkhead 3500				
36															
37	19	D6200	1	1	PL1400X1000X10	1400	1000	10	DUPLEX	48,02	Deck 6820				
38	20	D6200	1	1	PL1290X598X10	1290	598	10	GR-A	61,71	Long. bulkhead 2600				
39	21	D6200	1	1	PL900X598X10	900	598	10	GR-A	43,06	Bulkhead Fr. 24				
40	210_B	D6200	1	1	215X10/80X15 (200X10)	650	200	10	GR-A	10,00	Long. beam 1920 from CL Deck 6200				
41	210_F1	D6200	1	1	215X10/80X15 (80X15)	650	80	15	GR-A	6,00	Long. beam 1920 from CL Deck 6200				
42															
43	211	D6200	1	1	- 160X8	628	160	8	GR-A	6,31	Long. beam 1920 from CL Deck 6200				
44	212	D6200	1	1	TB150X80X10X10	707	150	10	GR-A	12,29	Long. beam 2070 from CL Deck 6200				
45	214	D6200	1	1	215X10/80X15 (80X15)	650	80	15	GR-A	6,00	Long. beam 1920 from CL Deck 6200				
46	217_B	D6200	1	1	215X10/80X15 (80X15)	650	80	15	GR-A	6,00	Long. beam 1920 from CL Deck 6200				
47	217_F1	D6200	1	1	215X10/80X15 (80X15)	650	80	15	GR-A	6,00	Long. beam 1920 from CL Deck 6200				




Diagram showing a beam layout with dimensions and a callout for AK170.

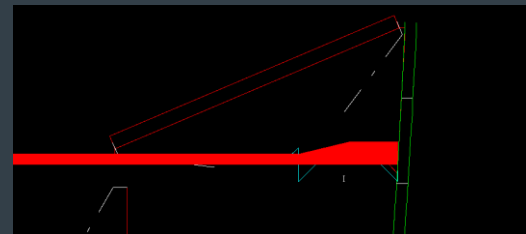
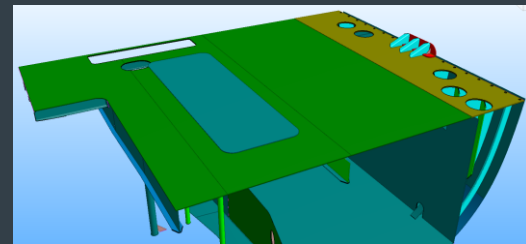
Dimensions: 215, 80, 15, 650,

Summary of the Last year improvements

- Modern Excel reports
- Saving quick access toolbar
- Save to COS while users are in the block
- Slanted Brackets connected two none parallel profiles
- Split shell frames
- WBD sketch many small improvements
- Speed up the generation of production data
- Indication holes
- Part number of Lugs
- Profile sketch with extra length presentation
- Bend info based on arcs for a Face plate
- Brackets with a shape relation
- Support Left and Right-handed system
- lock/freeze block

Why jumbo panels improve your engineering?

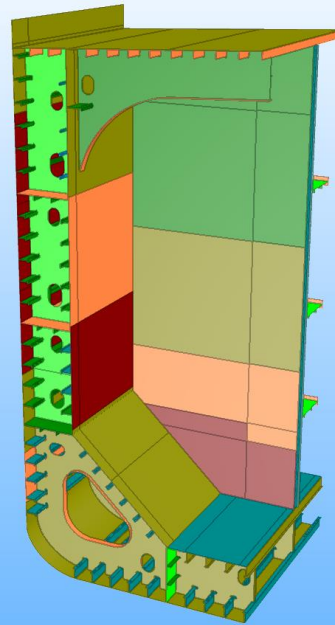
- The difference in thickness between two adjacent sub-plates can be presented with a taper.
- Parts related to a jumbo panel take the sub-plates' different thicknesses and materials into account. For example, related plates, including brackets, follow the thickness of the connected sub-plate.
- If the thickness of the connected sub-plate is changed later, or seams in the jumbo panel are deleted or moved, the system adjusts the position of the related parts accordingly.
- Extra length is now a bevel property. Extra length can be set for predefined bevels.
- Separate adding extra length is supported.
- The seams between the sub-plates get a bevel on both sides of the seam.
- Automatic beveling takes the properties of the sub-plates into account when determining bevels on seams, slots/splitters and profiles connected to the sub-plates.



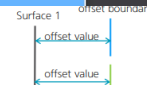
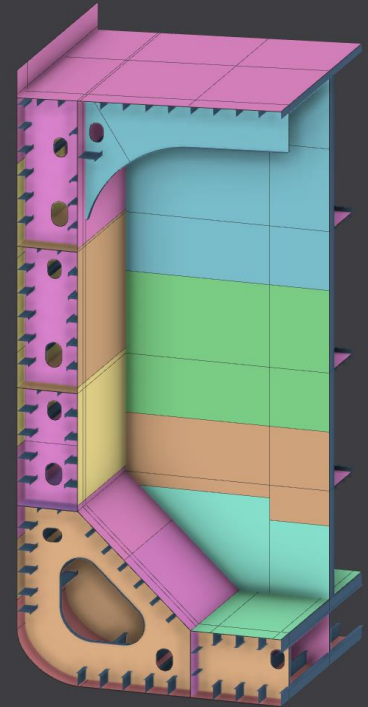
Napa Steel Interface



- 18 January 2024 NAPA and Cadmatic forces after a long cooperation an intensive cooperation to solve integration.
- Napa improve the API according information to support 100% Hu
- Cadmatic is implementing the p Thicknesses based on the Jumbo
- Support all topologic relations s upgrade the Surface steel to rea following the used parameters i Incl knuckled surfaces.



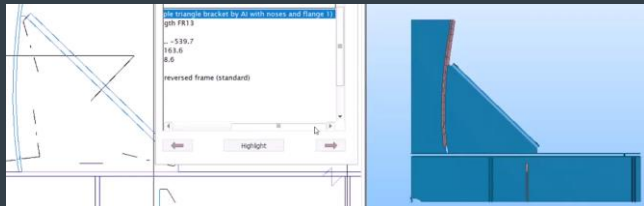
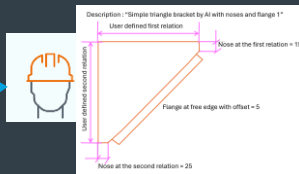
• Profile model should be used for the bound



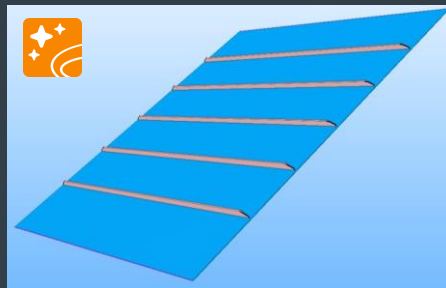


CADMATIC AI: create without limitations
In your own language, with your own voice

Help me with this bracket
type file:



create Deck 5000 with 5
profiles having Type B
End cuts



AI tomorrow or today?
Very soon!
We make the dream come true
Have a Dream!!!

generate a next generation tanker ship
basic design model with fuel efficiency
technology



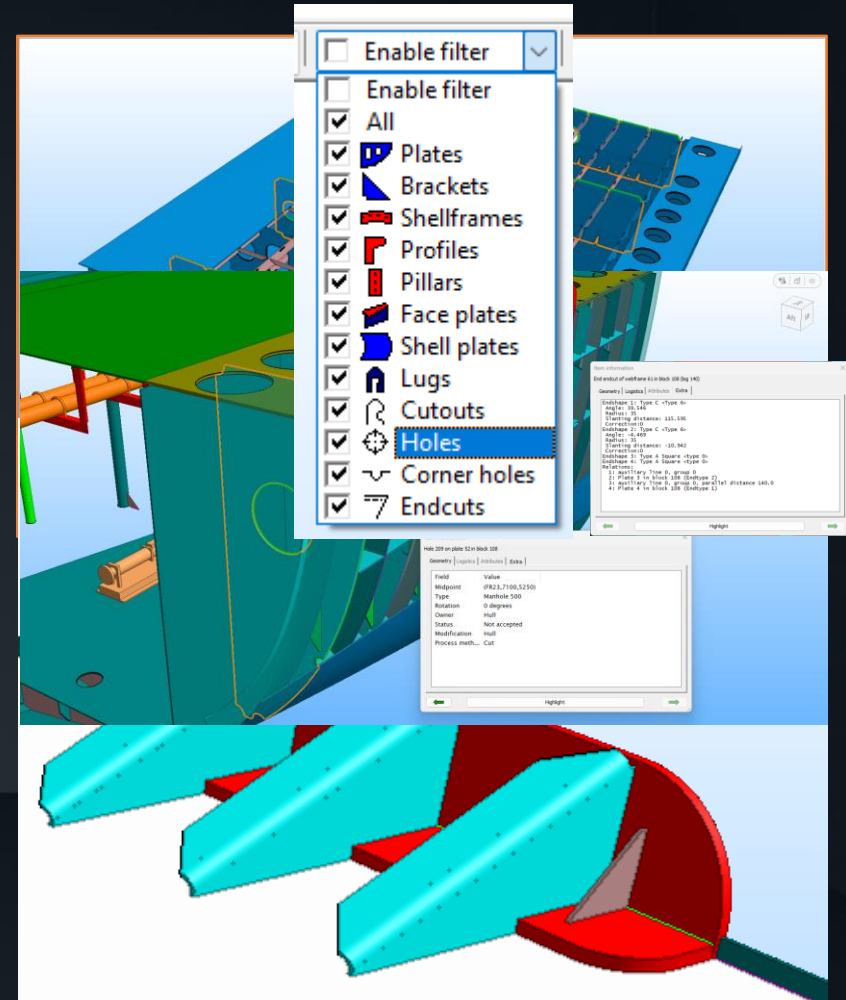
Sure, here is a best fit basic model
following the specifications:



AI today!

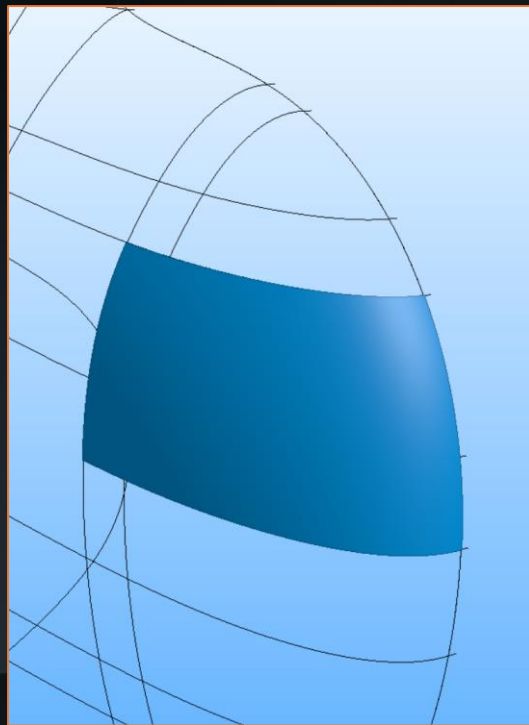
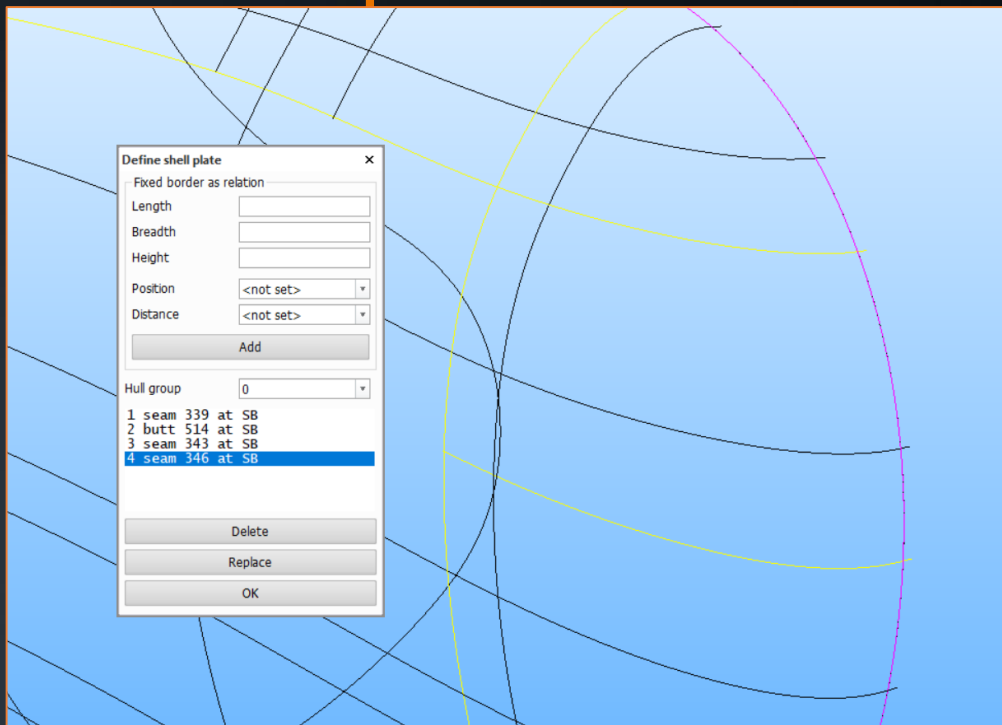
Hull Viewer or 3D Design?

- New visualization core
- Selection filters
- Selectable attributes and check or remove
- View cube



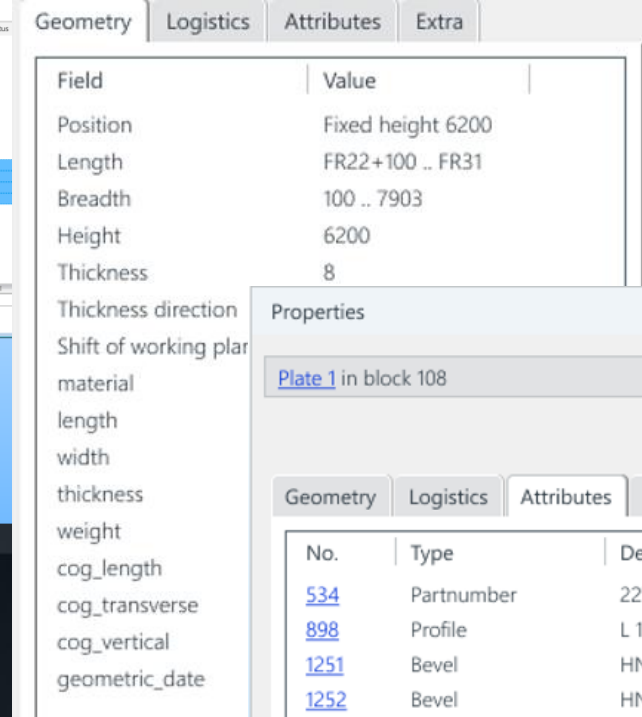
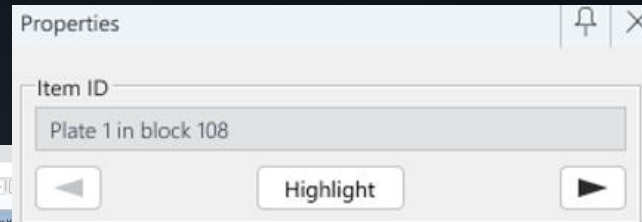
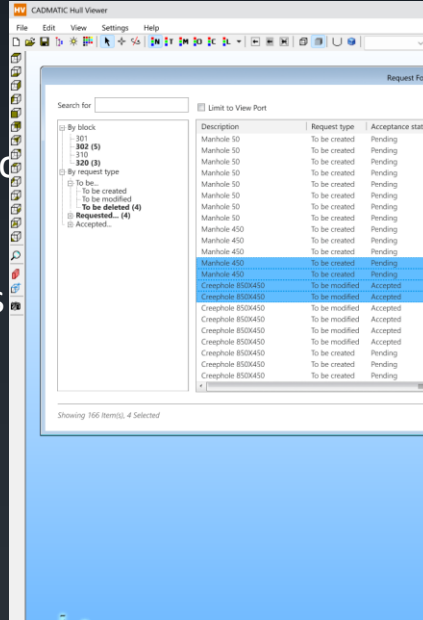
Hull Viewer is 3D Design!

Shell plate creation and modification in 3D



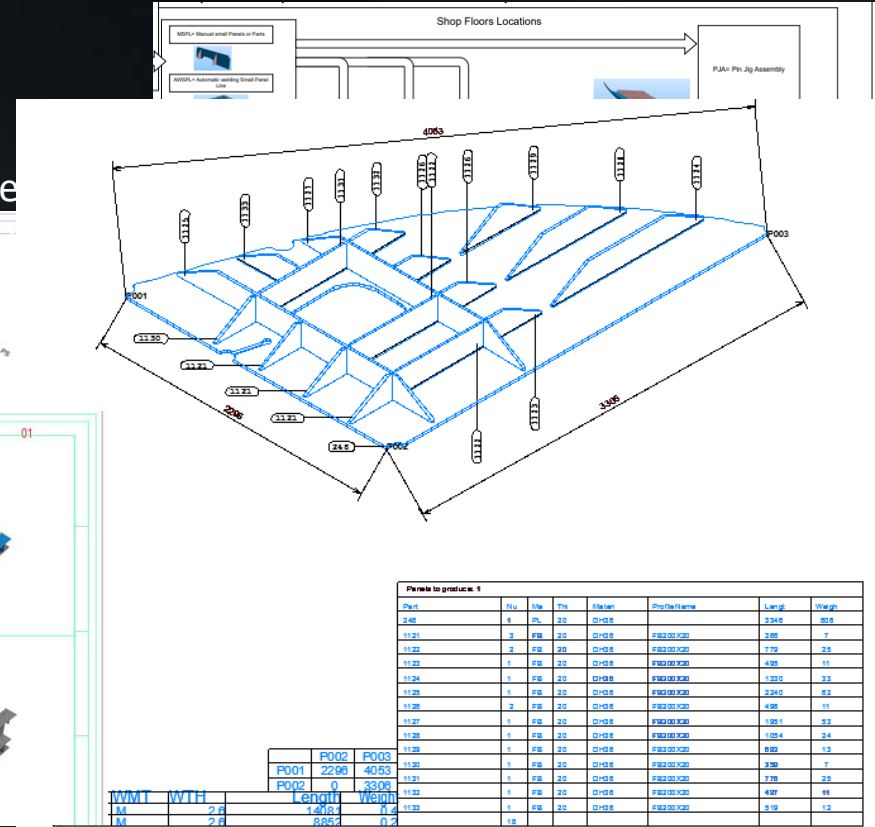
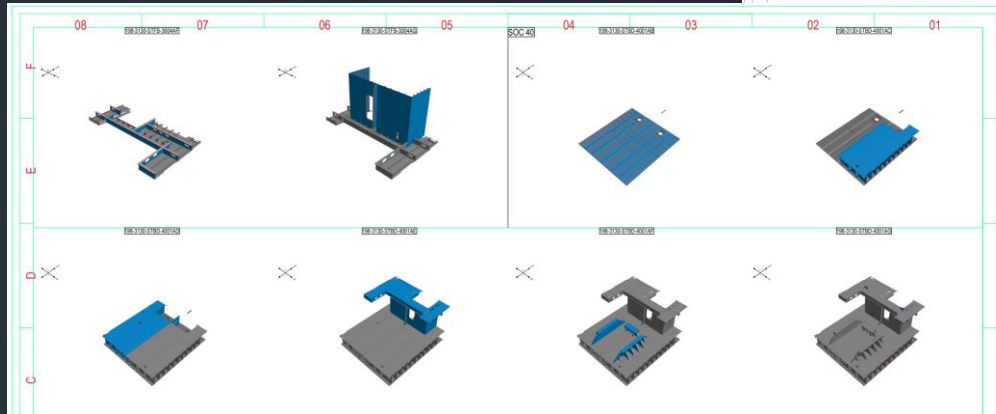
Hull Viewer is 3D Design!

- RFH Manager
- Modify properties by Properties
- Collision check
- Create and modify parts



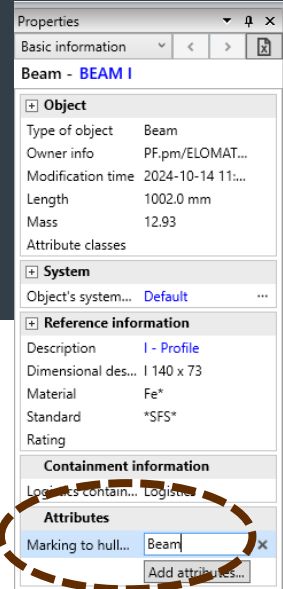
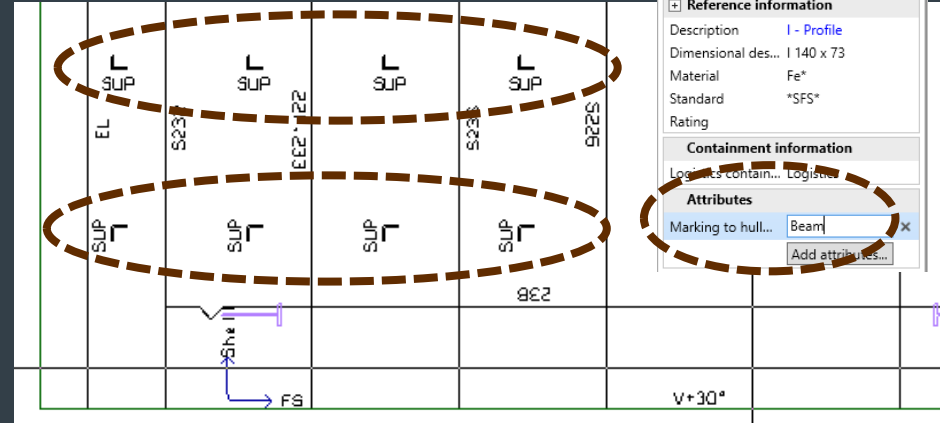
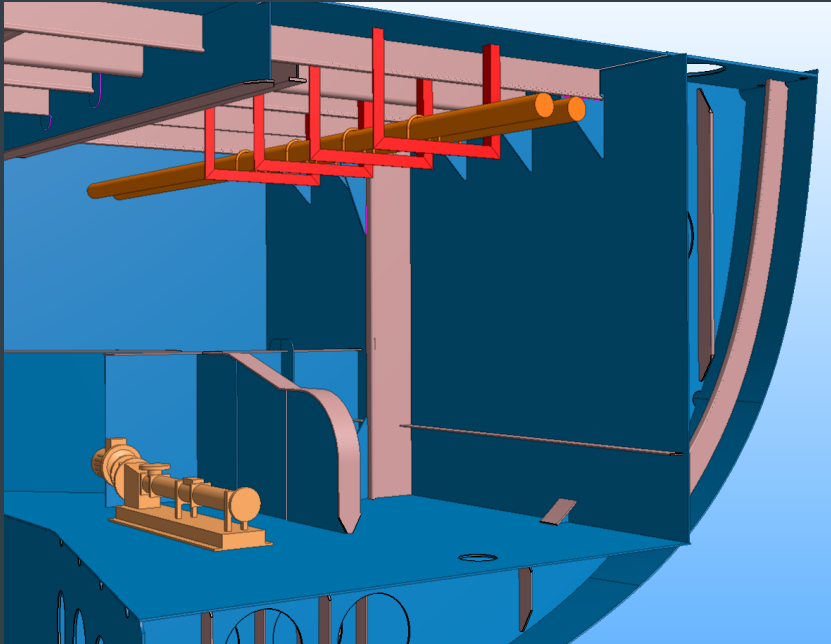
Production process improvements

- More details on the panel sketches
- Automatically distribute production tasks and define assembly locations, including supporting method, by using the Shop Manager.
- Mounting PDF Info per Yard location



Production information for Outfitting objects

- Outfitting markings in hull plates





Thank you!

