



2024 Highlights



Feel Empowered

 **CADMATIC**

Right-handed coordinate system

- Allow users to enter only numerical values, without necessary B0 prefix: "250" or "-1500"
- Coordinates for 2D drawing tools
- Adjust Breadth and Height coordinates in the status bar & current control position
- Shell application supports Right-Handed system.
- 3D Item information, namely Breadth, Height and COG values. The coordinates are shown according to the default grids of the active block.
- Hull Viewer functions: Clipping, Measure, Ctrl + P coordinates
- Adjust descriptions of different parts (VAR, VPR, ?/? etc). If SB or PS don't use +/- for values.
- Adjust standard texts (GRD keyword)

Modern report and New field types

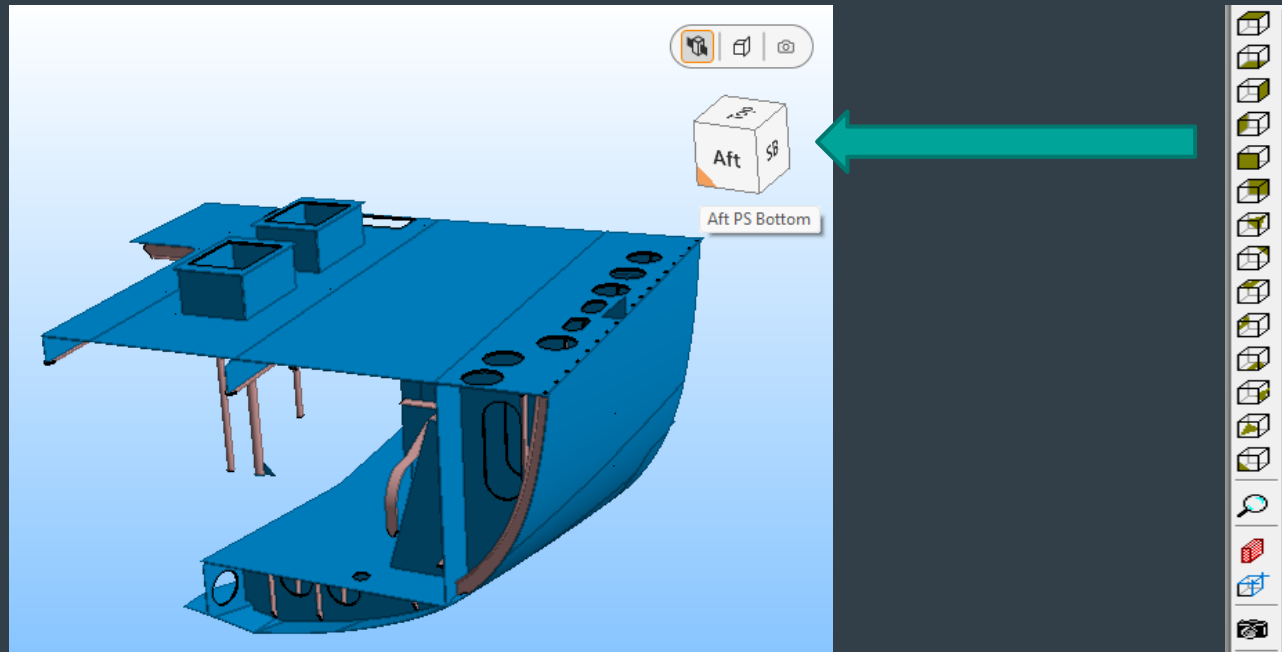
- Most derived data fields can be used.
- Logistica fields for Minimum and Maximum box values of any item.
- In case of creating a report for several blocks, grid of an active block will be used.

Logistical Fields Options					X
Description	Visible	Editable	ShowType	Groupable	
Weight	Yes	No	Summarize		
COG_length	Yes	No	Average		
COG_transverse	Yes	No	Average		
COG_vertical	Yes	No	Average		
Min_Length	Yes	No	Minimum		
Min_Breadth	Yes	No	Minimum		
Min_Height	Yes	No	Minimum		
Max_Length	Yes	No	Maximum		
Max_Breadth	Yes	No	Maximum		
Max_Height	Yes	No	Maximum		

CADMATIC											
Panel	Planelayer	Min L	Min B	Min H	COG L	COG B	COG H	Max L	Max B	Max H	Weight
D6199	H6200	FR29	3750	5892	FR29+4	3871	6016,9	FR29+8	3950	6092	1,7
D6200	H6200	FR22+9	100	5689	FR26+123	3226	6182,0101	FR31	7903	6830	6520,18
FD	FR27	FR24+90	4163	3510	FR27-180	5235	4145,0094	FR29+7	6600	4522	648,34
Shell		FR22+98	2904	1514	FR27+110	6849	3928,5732	FR31-199	7914	6250	3968,92
Tank	FR25	FR0	0	0	FR27+54	5529	3015,3632	FR31	7555	4598	4421,06
YA		FR26	6987	5710	FR27-320	7608	6247,5474	FR27+99	7891	6462	68,2
ZTank	FR24	FR0	0	0	FR26+153	6639	5025,4473	FR31	7898	6200	4096,91

Hull Viewer

- View cube

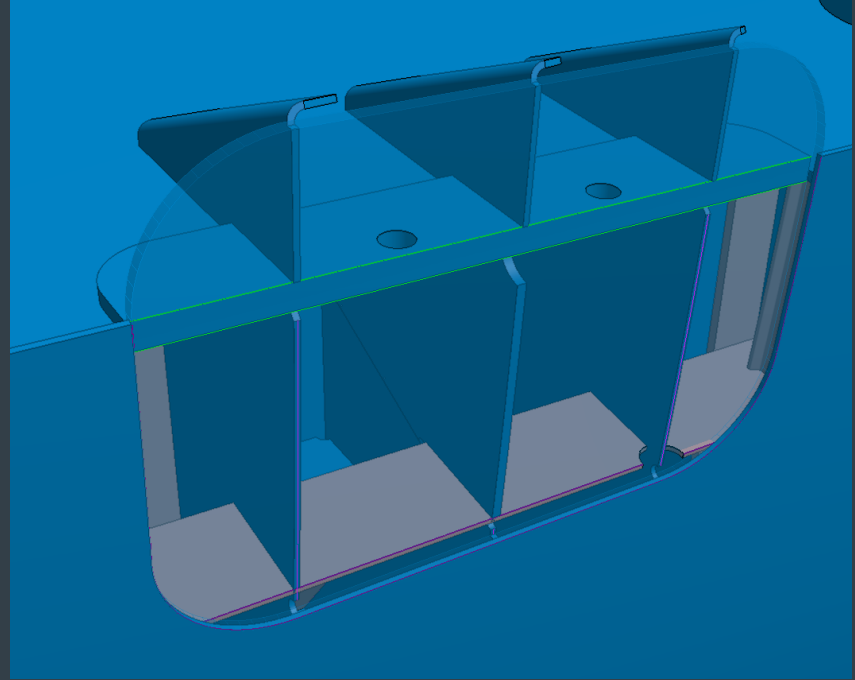
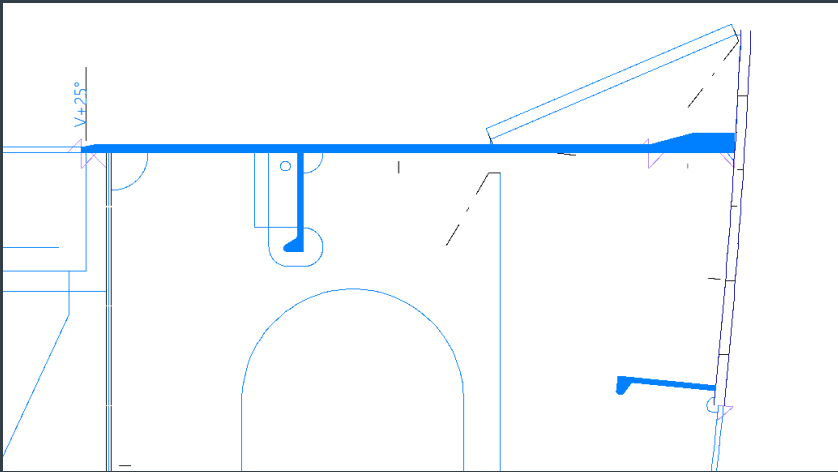


Jumbo Panel Beta Version

- The first official release will be 2025H1 Beta Version is available for all Clients
- This special version will be used to give the client time to investigate this new behavior.
- Your & client feedback is very welcome so we can improve when needed.
- Main benefits:
 - Plate with different thickness so less topologic relations which makes mutual relationships and topologic behavior more trustworthy.
 - Related plates incl brackets follow the thickness, automatic Bevel and Taper
 - Full control of parts with soft seams and splitters
 - Extra length is included into the bevel attribute

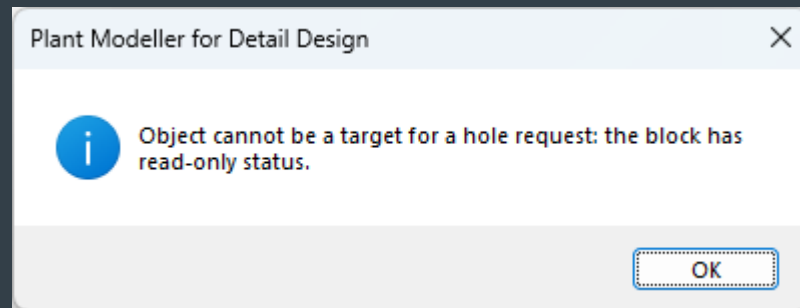
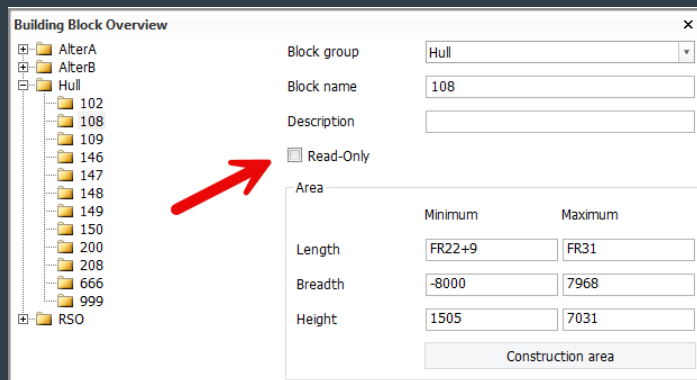
Brackets relations to the shape

- recalculated bracket once this shell plate is changed
- Jumbo panel relation

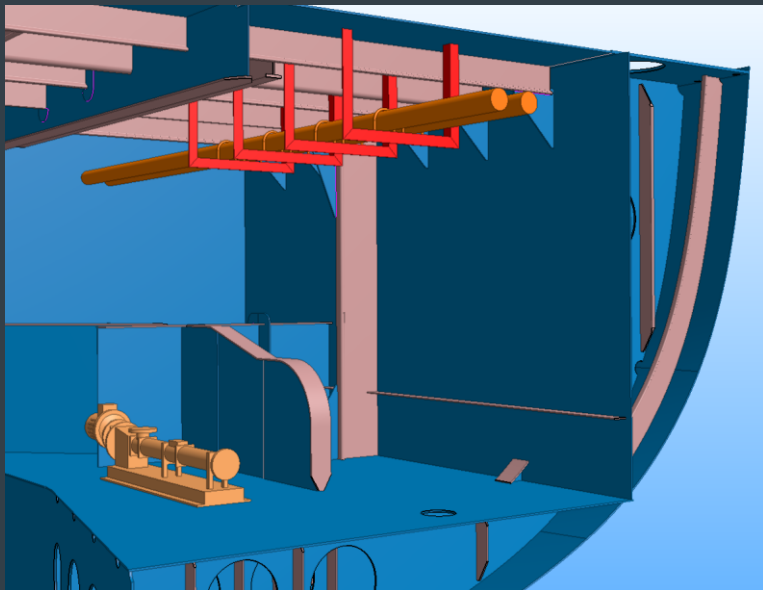


General improvements

- Possibility to lock/freeze block for changes



- Mark the contour of another hull plate in the same plane
- Outfitting markings in hull plates



Production -> Plate Cutting Data -> Marking -> Settings

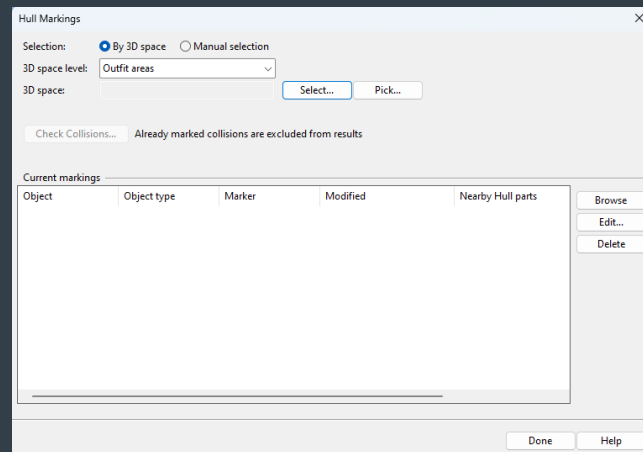
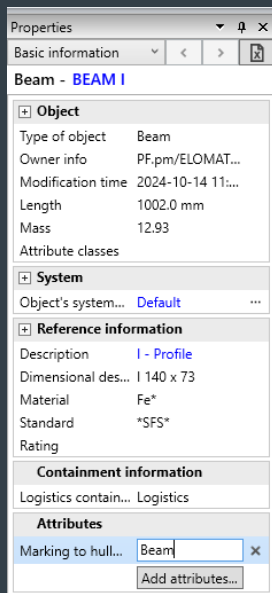
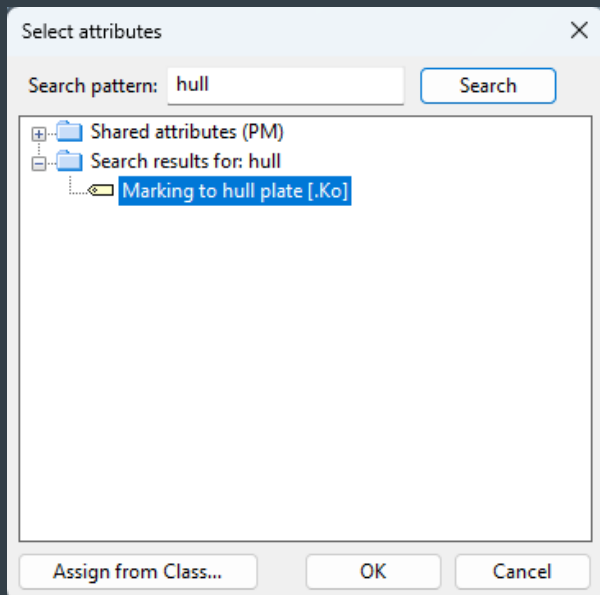
Setting description	Current value(s)
Marking Side	According to Mirroring Conditions
Increase Calculation Thickness	0
Original Contour Min. Extra Length	-1
Max. Distance Doubler - Main Plate	50
Doubler Size To Be Marked	5 300

[Hide related settings](#)

[illegible]

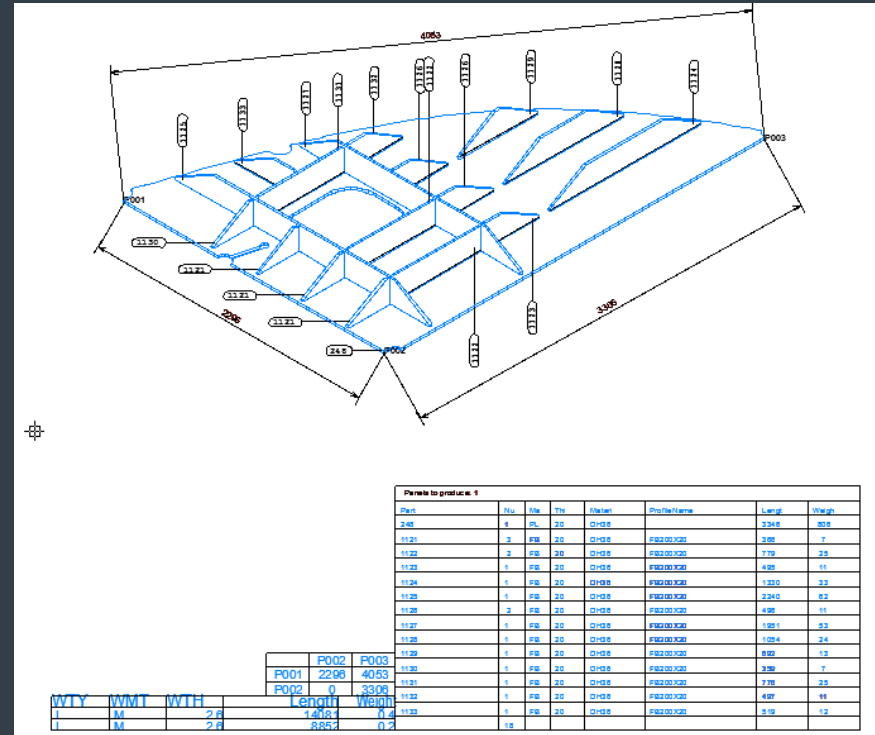
Outfitting Properties for Marking on Hull plates

- Outfitting markings in hull plates



WBD Sketch and Shop Manager improvements

- Yard Shop floor location
- Name method Yard
- Automatic Creation of reference points
- Presentation of the dimensions in the sketch



Questions

Feel Empowered

