



*Feel Empowered*

## Business News

Matti Juntunen  
Vice President

Image courtesy of  
Meyer Turku

## Cadmatic today – key highlights 2024



~40 M€



>6.000

customers, 60 countries



>320

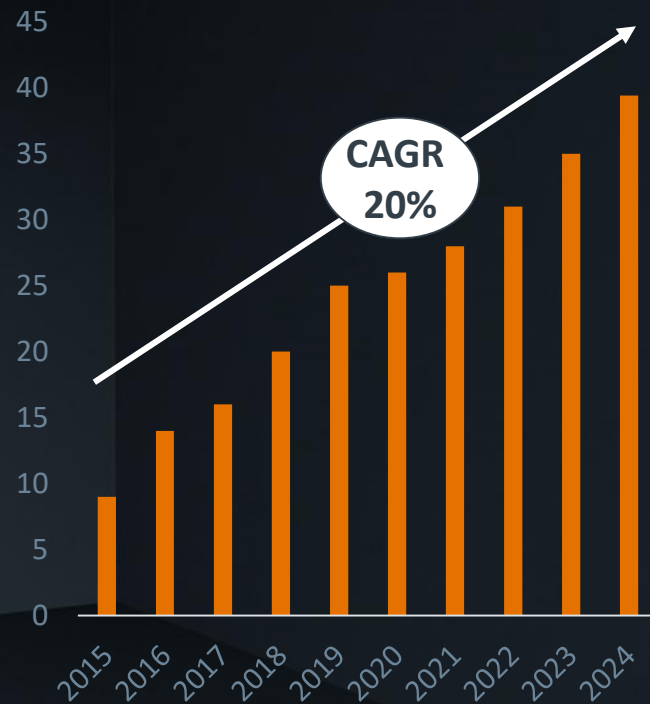
employees



~45 %

of active shipyards use  
Cadmatic software

### Revenue growth



# 80 New Cadmatic Marine Customers in 2025

Abance Ingeniería y Servicios S.L.

Ablemans LCS Oy

AERIUS Marine GmbH

Aldoris Oy

ALFRED Maritime GmbH

ALL WEATHER FERRY BOATS MANUFACTURING LLC

Amico Digital

APB Marine

API Futuristic

Austal Ships Pty Ltd

Barrier Marine Services Ltd

Bechtle B.V.

Bruce S. Rosenblatt

Cegelec SDEM

CMB.TECH NV

COTECMAR

Damen Shipyards Gdańsk sp. z o.o.

DECKMA GmbH

Desan Shipyard

DNY Finland Oy

Emenasa Lusitania, Unipessoal Lda

FERCHAU GmbH Oldenburg

Fidelis Maritime CI, Ltd.

FlemishFTW Ltd.

FSG S&O Design GmbH

FSG Shipyard GmbH

Fu Long Marine Co., Ltd.

Garden Reach Shipbuilders & Engineers (GRSE) Ltd.

Ghenova Brasil Projetos Ltda

GLO Marine Ltd

GustoMSC B.V.

Hagland Shipping

Heinen & Hopman Engineering India Pvt Ltd

Hooked Engineering GmbH & Co. KG

Icepronav Engineering SRL

iLenSys Technologies Private Limited

Kosaba Shipbuilding Corporation

Littau GmbH

Magma Yat İşletmeciliği Limited Şirketi

Marino Consulting Ltd

Maritiem Elektro Zeeland BV

Mazagon Docks Shipbuilders Limited

Misha Shipping

MKM Yachts d.o.o.

Moonsoft Oy

MY Kaos TBC, Yacht Kaos

My Marsa

NEOLINE ARMATEUR S.A.S.

Neptune Engineering

Nirmon Marine Solutions LLP

North Salmon Service AS

North Star Shipping (Aberdeen) Ltd

OCEANPACT NAVEGACAO LTDA.

Octopus Marine AS

Offshore Support, LLC

Oy Kewatec AluBoat Ab

ocean Engineering GmbH

Pontus Ship Design Ltd.

Project Y726

R Yacht Co.,Ltd.

Reach Subsea AS

Rensel Service GmbH

SAL Heavylift GmbH & Co. KG

Samuel Peiponen

SCC France

Scheepswerf en Machinefabriek Hardinxveld B.V.

Seaspan Ferries Corporation

Siris Finland Oy

Team Electric Oy Ab

Ulstein Design & Solutions B.V.

University of Trieste

Vedam Design & Technical Consultancy Pvt. Ltd.

Victoria Marine OÜ

Vik-Sandvik Design India Pvt. Ltd.

VOLTI AS

Wester Naval Architecture B.V.

Zebec Marine Consultants & Services Pvt. Ltd.

# Cadmatic Japan Co., Ltd.

Cadmatic Japan Co., Ltd. started operation in February 2024 to make the Cadmatic presence and support stronger for the Japanese customers

The new company is a joint venture between Cadmatic Oy and the long time Japanese partners NYK Trading and SEA Systems

The staff consists of selected existing workers from NYK Trading and SEA Systems. The board also includes selected members from Cadmatic Oy.

Tatsuya Yanagida san started as **Country Manager** for Japan in July this year

Headquarters: Sasebo  
Representation offices: Fukuoka and Tokyo



# Our investment priorities



## Digital Twins

Linking all relevant data



## AI

Automation and decision support



## PLM and Data Management

Single source of truth



Continuous investments into core technologies: modeling, visualization, information



Supporting our customers to be successful

# Our investment priorities



Digital Twins

Linking all relevant data



# Disconnected people, processes and data cost millions — and worse, they erode trust and delay progress



Disconnected and siloed systems & teams



Results in costly delays and inefficient operations



But if you connect people & data in a digital twin



You save money, time AND your sleep



A connected **digital twin** — gives every stakeholder the right information, in the right context, at the right time!

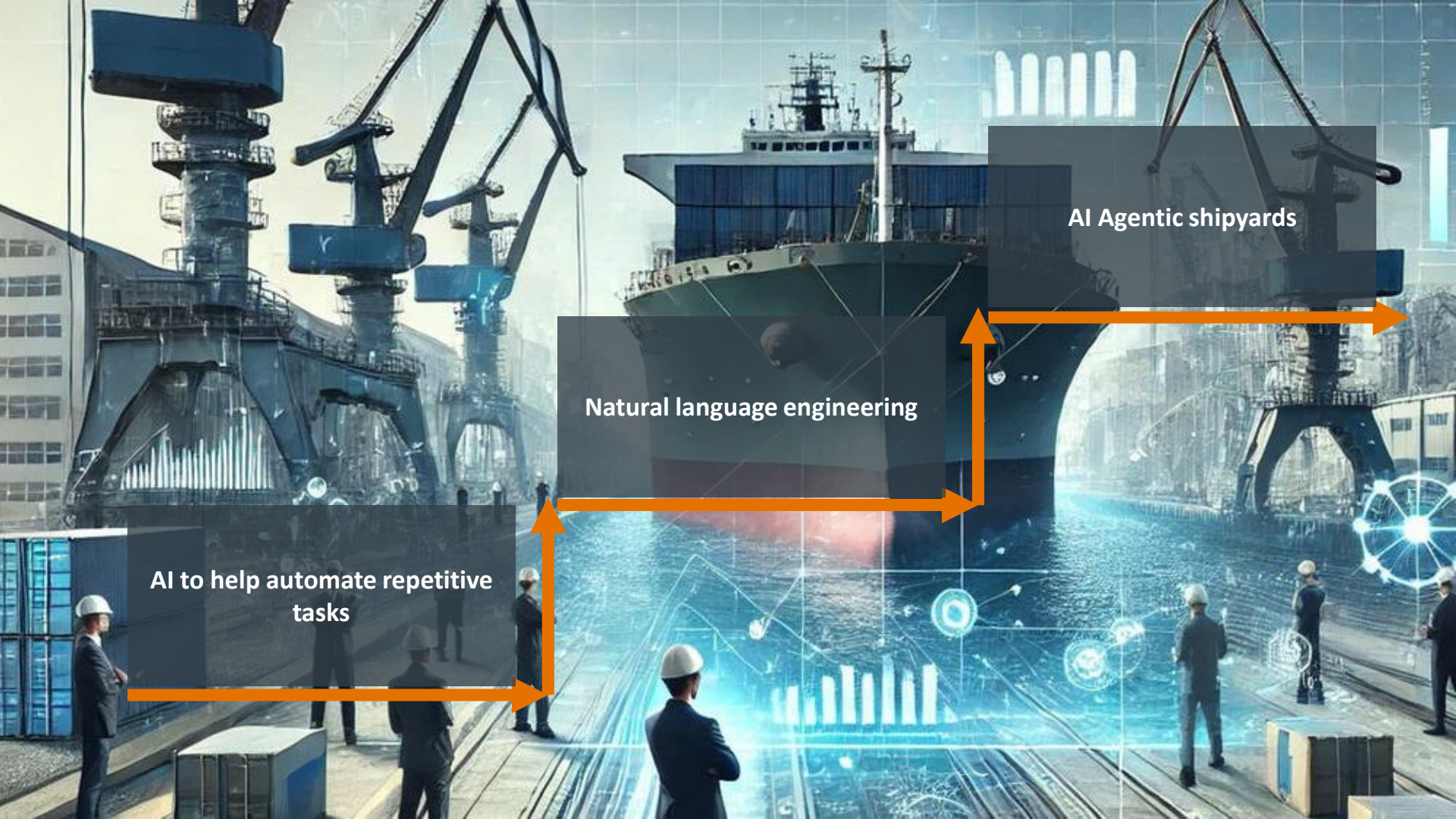
# Our investment priorities



AI

Automation and decision support





AI to help automate repetitive tasks

Natural language engineering

AI Agentic shipyards

# Our investment priorities



PLM and Data  
Management

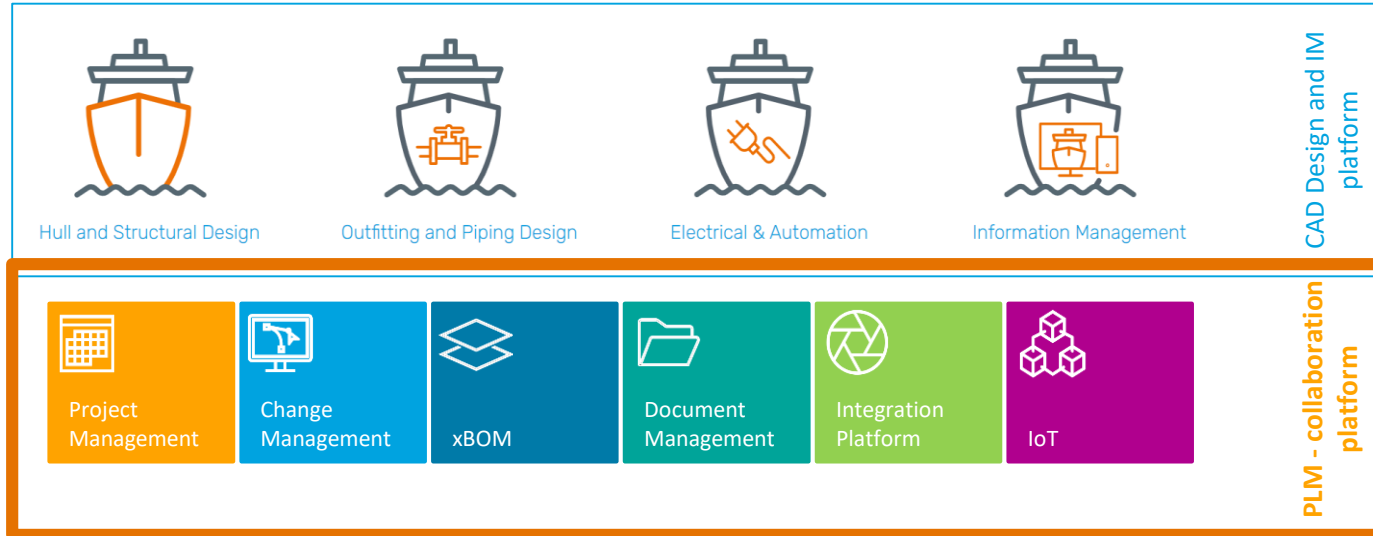
Single source of truth



# CADMATIC WAVE - Enterprise-wide collaboration management platform (PLM)

## Collaboration platform, PDM/PLM

- Specialised shipbuilding specific process maps, customizable for each organization
- Single Source of truth for all collaborators
- Secure access control to data
- Automated workflows for data management
- Embedded shipbuilding specific data model
- Significantly reduced platform implementation time
- Expertise knowledge of the industry



Data flows to enable collaboration and integration between IT systems focusing on the shipbuilding process instead of hardware limitations

# The right decisions at the right time

Why we need a complete digital system



## The right digital system offers:

- Control and visibility, at every stage of a project.
- A reliable source for all product information, procurement information, design data points, installation details and more.
- Synchronized changes across functions and stakeholders.
- Data visualization in context (eShare).

# thyssenkrupp, Germany



- Industrial and technology group with around 98,000 employees and +300 years of experience and expertise in the shipbuilding industry
- Specialized in naval shipbuilding
- Implemented CADMATIC Wave in 2025 for Polarstern II - project



# CADMATIC Wave Reference



## POLARSTERN II



 **ALFRED-WEGENER-INSTITUT**  
HELMHOLTZ-ZENTRUM FÜR POLAR-  
UND MEERESFORSCHUNG

### She'll be a ship like no other

Icebreaker, multidisciplinary research platform – and pioneer: Polarstern II will be a modern polar research and resupply vessel to succeed the Polarstern. She will be the lifeline to the Arctic and Antarctic, not to mention a shining example of sustainability and innovation in shipping. She will ensure that top-notch research continues in the future, offering the global community new insights into how our oceans and polar regions can be protected.

- 160 meters length
- 27.3 meters width
- 11.10 meters maximum draft
- 34,000 kWm power
- 26,700 GT grosstonnage
- PC 2 Polar Class ice class
- 110 / (140) Persons on board normal operations / (max)
- 1,8m Level ice+20% snow @ 3kn
- 90 days autonomy at sea
- Battery system

Source: <https://polarstern.awi.de/wp-content/uploads/2024/12/st03-die-neue-polarstern-factsheet-uk.pdf>

# Forerunner with continuous technological development

- Active involvement in several different groups seeking technological innovations and more productive and efficient shipbuilding
- Continuous and active collaboration not only with shipyards, design offices and ship owners, but also with maritime institutes and universities

## SEUS Project



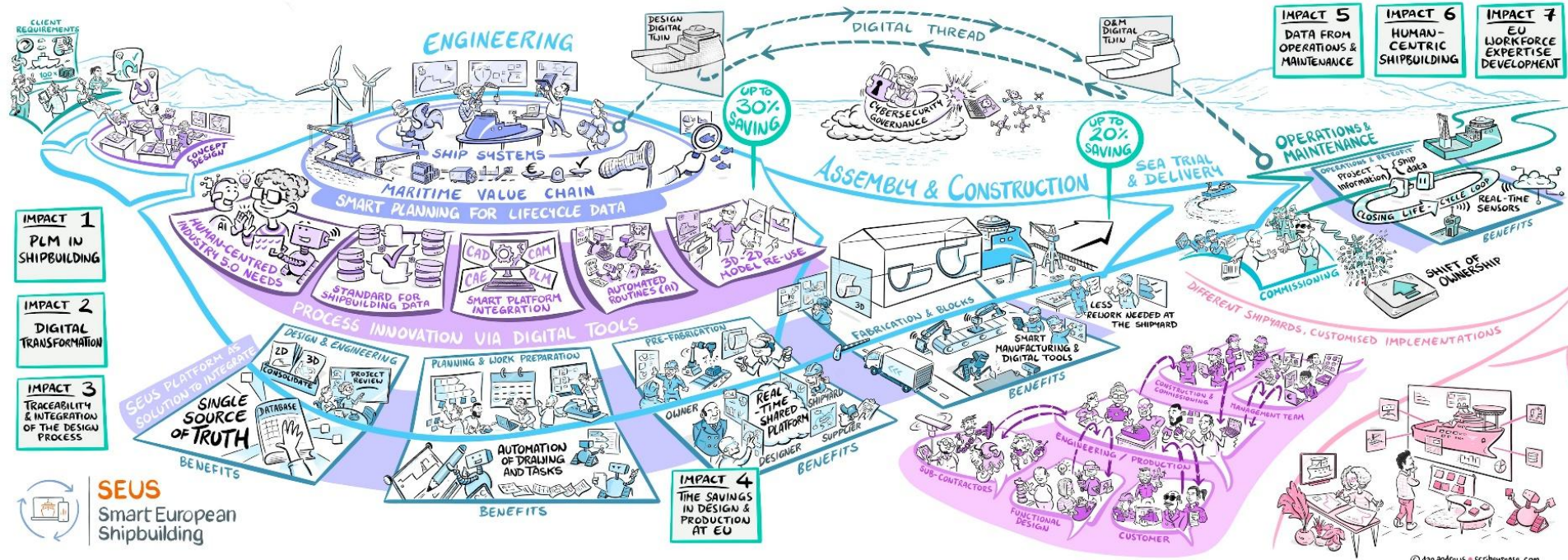
## Virtual Sea Trial Project

### Meyer NECOLEAP - Co-Innovation Project Virtual Sea Trial

- **Future sea trials** will consist of both virtual and physical elements.
- **Virtual commissioning** will start as early as possible in the ship-building project, years earlier than current sea trials start.
- **Left-shift testing** lowers the risk of implementing new technologies and saves time and manpower from trials.
- A **unified, distributed, multivendor test environment** for the while shipbuilding ecosystem is to be created in this project.
- **Help us define the future ship commissioning practices, guidelines, and technologies!**



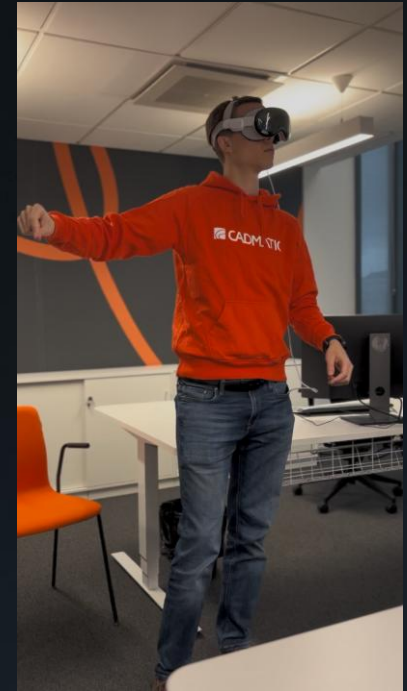
# SEUS project



Target: up to 30% time saving in engineering and 20% in assembly and construction

# Virtual SEA TRIAL - Project 2024-2026

*“The Virtual Sea Trial project aims to develop a unified, distributed test environment for virtual sea trials and commissioning for the whole shipbuilding ecosystem. Sustainable, reliable, and greener testing and commissioning procedures are achieved by including radical new ideas on creating virtualized, shared testing environments from which the whole shipbuilding ecosystem can benefit.”*



# Cadmatic One License (COL)

New Cadmatic Licence Subscription system  
introduced in 2026



# Why is the new COL model great for Cadmatic customers?

## For our Customers

- **Greater value for money** through access to more products at a better price
- **Encourages deeper adoption**, enabling you to solve more problems within one ecosystem
- **More flexibility** to optimize usage across applications
- **Simplified experience**, reducing complexity in licensing and procurement
- **Attractive conversion plans**, will be offered to existing customers

A man wearing a yellow hard hat and a grey suit jacket over a light blue shirt is shown in profile, looking towards the right. He is holding a tablet computer. The background is a large industrial shipbuilding yard with various structures, cranes, and a large white cruise ship under construction. The scene is lit with a warm, golden light, suggesting a sunrise or sunset.

*Feel Empowered*

 CADMATIC

**CADMATIC Data-driven  
Shipbuilding Solution  
supports your DX**